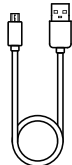
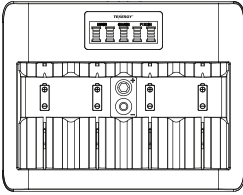


## TN486U Universal Battery Charger

For Ni-MH Ni-CD AA / AAA / C / D / 9V Batteries



Supplied USB-A to Micro USB Cable

### Quick Start

Use this battery charger to charge 1 to 4pcs of Ni-MH or Ni-CD AA/ AAA/ C/ D size or 1 piece of Ni-MH or Ni-CD 9V size batteries.

### Features

- Worldwide use with Micro-USB/ Type-C input
- 4 charging bays for AA/AAA/C/D and 1 charging bay for 9V
- LCD display
- Negative Delta V cut-off
- Reverse polarity / bad cell / short circuit / safety timer protection

### Specifications

Model	TN486U
Input	5V DC 2A or 5V DC 1A (by Micro-USB/ Type-C)
Output	(Input 2A) AA / C / D : 600mA (1-4pcs); AAA : 300mA (1-4pcs); 9V : 35mA (1piece)
	(Input 1A) AA / C / D : 450mA (1-4pcs); AAA : 300mA (1-4pcs); 9V : 35mA (1 piece)
Accessory	50cm Micro USB to USB-A cable

### Charging Time

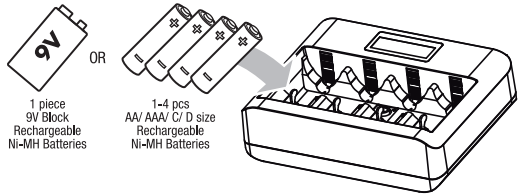
\* This charger can adopt two levels input (5VDC 1A / 2A). The charging time of different input is shown as below

Size	Pcs	Input	Charging Current	Capacity	Time
AA	1-4	5V DC 2A	600mA	2000 - 2500 mAh	4-5 hours
AAA	1-4	5V DC 2A	300mA	800 - 1000 mAh	3-4 hours
C	1-4	5V DC 2A	600mA	2300 - 4500 mAh	4-9 hours
D	1-4	5V DC 2A	600mA	2300 - 10000 mAh	4-20 hours
9	1	5V DC 2A	35mA	200 - 300 mAh	8-10 hours
AA	1-4	5V DC 1A	450mA	2000 - 2500 mAh	5-6 hours
AAA	1-4	5V DC 1A	300mA	800 - 1000 mAh	3-4 hours
C	1-4	5V DC 1A	450mA	2300 - 4500 mAh	6-12 hours
D	1-4	5V DC 1A	450mA	2300 - 10000 mAh	6-24 hours
9	1	5V DC 1A	35mA	200 - 300mAh	8-10 hours

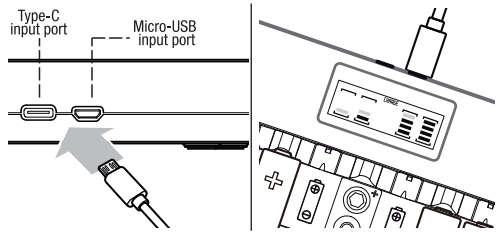
\* Charge time will vary depending upon the brand, capacity and condition of batteries being charged.

### Charging Instruction

- 1 Insert 1 to 4 pieces of rechargeable Ni-MH AA/ AAA/ C/ D size battery or 1 piece of 9V cell into the battery compartment. Make correct contact for polarity (+ and -) according to the sign in the battery compartment.



- 2 Connect the charger with micro USB / Type-C cable into a standard USB port (5V DC 2A or 5V DC 1A) (not included) . The LCD will indicate the proper charging status.



Battery Status	Start Charging	Completed
Charging in progress		
Charging completed		
Bad Cell		

\* It could be any of its 5 bays, indicated by flashing bottom and top brackets.

- 3 The charger detects the status of each of the cells in the battery compartment. If any batteries are unsuitable for charging, i.e. short circuit or bad cells, the wording "ERROR" will be shown on the LCD screen and the battery icon will flash. Please remove and replace the damage battery.
- 4 Remove the batteries from the charger when the charging is finished. Unplug the charger and remove the batteries from the charger when not in use.

### IMPORTANT SAFETY INSTRUCTIONS:

1. SAVE THESE INSTRUCTIONS, DANGER-TO REDUCE THE RISK OF FIRE OR ELECTRIC SHOCK, CAREFULLY FOLLOW THESE INSTRUCTIONS.

- 2 This charger is intended for Ni-MH rechargeable batteries only. Attempting to charge non-rechargeable batteries may cause personal injury and damage to the charger.
- 3 Do not expose charger to rain or moisture.
- 4 Do not operate the charger if it has been subjected to shock or damage. Take it to a qualified serviceman for repair.
- 5 Do not disassemble the charger. Incorrect reassembly may result in a risk of electric shock or fire.
- 6 Unplug the charger from USB port before attempting any maintenance or cleaning. Use damp cloth to clean the surface, do not immerse into water.
- 7 Before scrapping your charger, remove batteries from the unit and ensure they are disposed of safely.
- 8 This appliance can be used by children ages 8 and above and persons with reduced physical, sensory or mental capabilities or lack of experience and knowledge if they have been given supervision or instruction concerning use of the appliance in a knowledgeable way and understand the hazards involved.
- 9 Children shall not play with the appliance.
10. Cleaning and user maintenance shall not be made by children without supervision.

This device complies with Part 15 of the FCC Rules, Operation is subject to the following two conditions: (1) This device may not cause harmful interference, and (2) This device must accept any interference received, including interference that may cause undesired operation, CAN (ICES-3(B) / MBM-3(B))

Warning: Changes or modifications to this unit not expressly approved by the party responsible for compliance could void the user's authority to operate the equipment.

NOTE: This equipment has been tested and found to comply with the limits for a Class B digital device, pursuant to Part 15 of the FCC Rules. These limits are designed to provide reasonable protection against harmful interference in a residential installation. This equipment generates, uses and can radiate radio frequency energy and, if not installed and used in accordance with the instructions, may cause harmful interference to radio communications. However, there is no guarantee that interference will not occur in a particular installation. If this equipment does cause harmful interference to radio or television reception, which can be determined by turning the equipment off and on, the user is encouraged to try to correct the interference by one or more of the following measures:

- Reorient or relocate the receiving antenna.
- Increase the separation between the equipment and receiver.
- Connect the equipment into an outlet on a circuit different from that to which the receiver is connected.
- Consult the dealer or an experienced radio/TV technician for help.